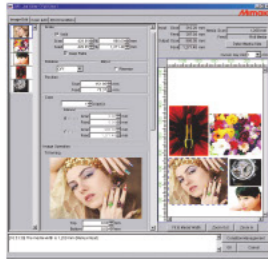


New generation output software with 16 bit rendering (bundled item)



High performance RIP software designed to fully enable all advanced features of JV33 series printer



[8 bit rendering]
Tone jumps are likely to occur



[16 bit rendering]
Smooth gradation without tone jumps

16 bit rendering eliminates tone jumps and produces fine color reproduction. The web update function helps you to achieve both software update and profile download more easily. White Ink Overlay Printing, Metallic Color Library and among other functions help you to produce higher image quality.

RasterLink Pro 5 SG

Specifications

Item	Specifications		
	JV33-130	JV33-160	JV33-260
Head	On-demand Piezo head (180 nozzles × 8 lines) × 1 head		
Maximum print width	1,361 mm (53.5")	1,610 mm (63.3")	2,632 mm (103.6")
Printing resolution	540, 720, 1440 dpi		
Printing mode (scan × feed)	540 × 720 dpi, 540 × 900 dpi, 540 × 1080 dpi		
	720 × 540 dpi, 720 × 720 dpi, 720 × 1080 dpi, 720 × 1440 dpi		
	1440 × 1440 dpi		
Ink	Kind	Exclusive Solvent ink: ES3 ink, SS21 ink	
		Exclusive aqueous pigment ink	
		Exclusive dye sublimation ink	
Capacity	4-color mode: 440 ml cartridge × 2 / color, 880 ml / color		
	6-color mode: 440 ml cartridge × 1 / color, 440 ml / color		
Media	Size	1,371 mm (53.9")	1,620 mm (63.9")
	Roll weight	Less than 25 kg (55.1 lbs.)	
	Print surface	Face out	
	Roll inside diameter	2 inch or 3 inch	
Media cutting	Cutting on Y direction by cutter at the head		
Media heater	Triple stage intelligent heater (Pre / Print / Post)		
Media Take-up device	Roll take-up device (standard), inside/outside selectable		
Interface	USB 2.0		
Applicable standards	VCCI Class A, FCC Class A, UL 60950-1		
	CE Marking (EMC directive, low voltage directive), CB report		
Power	AC 100 ~ 120 V ± 10%, AC 220 ~ 240 V ± 10%, 50/60 Hz ± 1 Hz		
Power consumption	Less than 1,440 VA		Less than 1,440 VA × 2 plugs
Operation environments	Usable temperature: 20°C ~ 35°C (64 ~ 95°F), Humidity: 35 ~ 65%RH (No condensation)		
Dimensions (W × D × H)	2,289 × 739 × 1,424 mm (90.1" × 29.1" × 56.1")	2,538 × 739 × 1,424 mm (99.9" × 29.1" × 56.1")	3,650 × 1,302 × 1,424 mm (143.7" × 51.3" × 56.1")
Weight	145 kg (320 lbs.)	160 kg (353 lbs.)	450 kg (992 lbs.)

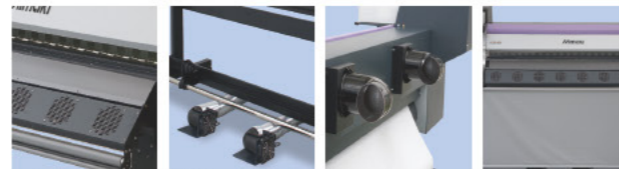
Supplies

Item	Item No
SS21 Solvent ink	440 ml SPPC-0501 C/M/Y/K/Lc/Lm
	220 ml SPC-0504W-2
	2liters* SPC-0588 C/M/Y/K/Lc/Lm
ES3 Eco solvent ink	440 ml SPC-0440 C/M/Y/K/Lc/Lm
	220 ml SPC-0433W-E
	220 ml SPC-0433S-E
Aqueous pigment ink	220 ml SPC-0494 C/M/Y/K/Lc/Lm
Sb52 dye sublimation ink**	440 ml SPC-0584 NK/K/RK/NRK/BB/LBB/BLM/Y/LBL/LM
	2liters* SPC-0585 NK/K/RK/NRK/BB/LBB/BLM/Y/LBL/LM
Wiper kit 33S	10 pcs SPA-0134
Waste ink bottle (2L)	1 pc SPA-0117
Cutter blade assy	1 pc SPA-0107
MS cleaning cartridge	220 ml SPC-0294
Head cleaning cartridge	220 ml SPC-0188S

* 2 liter ink packs can be used with the bulk ink system.
** Sb52 ink has 4 types of black ink: Normal black(NK), Deep black(K), Reddish black(RK) and Normal Reddish black(NRK).

Option

Item	Item No
MBIS (Mimaki Bulk Ink System)	JV33-130/160 OPT-J0305
	JV33-260 OPT-J0308
Drying and exhaust unit 130	JV33-130 OPT-J0129
Drying and exhaust unit 160	JV33-160 OPT-J0130
Drying fan unit 260	JV33-260 OPT-J0205
Rear fan unit 260	JV33-260 OPT-J0206
LED unit 260 for double sided prints	JV33-260 OPT-J0207
Static-cling prevention sheet kit 260	JV33-260 OPT-J0209



1. Drying fan 2. Exhaust fans 3. Rear fans 4. Exhaust curtain
"Drying and exhaust unit" includes all of 1, 2, 3 and 4.

●Some of the samples in this catalogue are artificial renderings. ●Specifications, design and dimensions stated in this catalogue may be subject to change without notice (for technical improvements, etc.). ●The corporate names and merchandise names written on this catalogue are the trademark or registered trademark of the respective corporations. ●Inkjet printers print using extremely fine dots, so colors may vary slightly after replacement of the printing heads. Also note that if using multiple printer units, colors could vary slightly from one unit to other unit due to slight individual differences.

MIMAKI ENGINEERING CO., LTD.

2182-3 Shigeno-otsu, Tomi-city, Nagano 389-0512, Japan
Tel: +81-268-78-2288
trading@mimaki.jp www.mimaki.co.jp

MIMAKI USA, INC.

150 Sateelite Boulevard, suite A, Suwanee, Georgia 30024, U.S.A
Atlanta +1-888-530-3988 Boston +1-888-530-3986
Los Angeles +1-888-530-3987 Chicago +1-888-530-3985
www.mimakiusa.com

MIMAKI EUROPE B.V.

Stammerdijk 7E,
1112 AA Diemen, The Netherlands
Tel: +31-20-4627-640
www.mimakieurope.com

printed in Japan DB10289-05

Wide Format Inkjet Printer

JV33 Series
JV33-130 / JV33-160 / JV33-260

Mimaki

Being Beautiful Is Not Enough.
High Quality & High Speed. Ultimate Cost Performance Achieved By JV33 Series.



Silver Ink
Eye-catching metallic effects!



Maximum Printing Width
1,361 mm (53.5")

JV33-130

Maximum Printing Width
1,610 mm (63.9")

JV33-160

Maximum Printing Width
2,632 mm (104.0")

JV33-260